

2" POLY-CENTRIFUGAL PUMPS

- 200 GPM Max Flow
- 45 PSI Max Pressure
- 112 GPM @ 25 PSI
- Required Horsepower: 5 Hp
- 2" Port Size
- Vac-U-Seal Impeller
- Close-coupled Shaft
- Fits 3/4" Diameter Shaft
- Double Wet Seal Assembly
- Chemical Resistant Materials
- Also Available in Cast-Iron

John Blue Company poly-pumps are not only lightweight and portable, but they provide incredible value to producers who need quality, affordable options for transporting liquids.

- Fully-assembled from the factory—ready to be attached to power source immediately.
- Double wet seal assembly—pump can be run dry without causing seal failure, seal is antifreeze cooled. (Antifreeze is pre-filled from the factory.)
- Closed impeller technology—pump efficiency improves over time as the impeller wears.
- Polypropylene body, FKM and Viton® Seals, 316SS impeller shaft for excellent chemical resistance.
- Pump can be removed, or engine can be replaced without having to disassemble the pump.
- Handles the harshest liquid de-icing products on the market, which makes these poly pumps an excellent choice to keep surfaces free of ice and snow.



PSP-3240

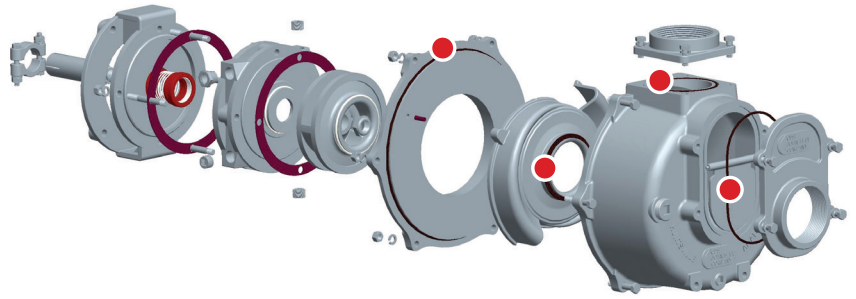


PSP-3240-G6B

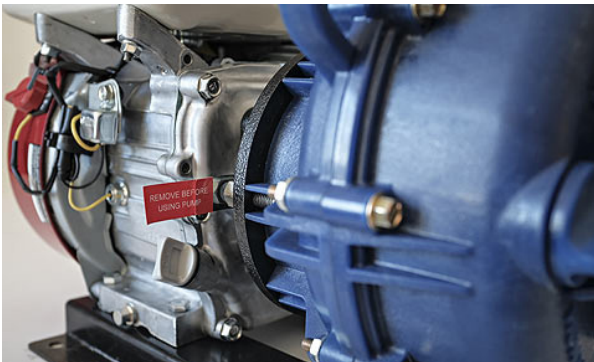
Several models and power source configurations to choose from: Single and Three Phase 5 HP Electric Motors, 5 & 6 HP Gasoline Engines; all models come standard with 2" FPT Ports with 220 Flange adapters optional.

FEATURES:

- Patented Vac-U-Seal impeller design creates a vacuum between the impeller and mechanical seal. Lack of pressure on the seal face minimizes seal wear and results in a longer seal life.
- Double wet seal design provides for continuous lubrication of the seal faces. This wet seal design allows the pump to be run dry for extended periods with no damage to the mechanical seal faces.
- Closed impeller design minimizes thrust loading on the drive motor extending the life of the drive motor. Impeller wear increases performance, our pumps get better with use!

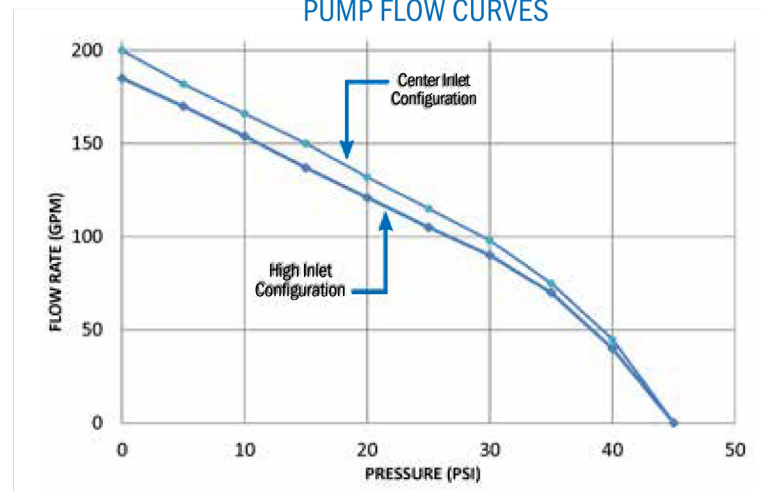


- Latest technology using o-rings instead of old gasket technology makes pump maintenance easier.



Shaft locating tool installed at the factory which prevents shaft displacement during installation on power source.

PUMP FLOW CURVES



2-in-1 Inlet Design (patent pending): Use center inlet for maximum flow or high inlet for drain back capability.

Contact us today: Call 1-800-253-2583 or email info@johnblue.com

About John Blue Company

John Blue Company manufactures agricultural and industrial pump products and systems. Since 1886, farmers have counted on John Blue agricultural pumps for reliability, serviceability, and value that are "Guaranteed to Do the Job". John Blue offers products for a wide range of applications including irrigation, liquid metering, and chemical injection. For more information, visit our web site: johnblue.com