

NEWS FLOW

• JOHN BLUE COMPANY QUARTERLY NEWSLETTER •

WE ARE DEDICATED TO MANUFACTURING QUALITY PRODUCTS.

NEW PRODUCTS AND UPDATES WITHIN OUR CENTRIFUGAL PUMP FAMILIES DEMONSTRATE THIS COMMITMENT TO OUR CUSTOMERS AND END-USERS.



NEW! 3" POLY-CENTRIFUGAL TRANSFER PUMPS

375 GPM MAX FLOW | 45 PSI MAX PRESSURE

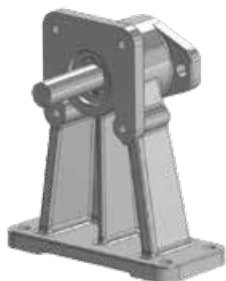
The 3-inch poly-centrifugal pump incorporates our proven double “wet-seal” design ensuring the pump can be run dry without causing seal failure.

The closed impeller technology means the pump efficiency improves over time as the impeller wears. These pumps feature a 2-in-1 inlet and are resistant to the harshest chemicals because they are built with chemical resistant materials—Polypropylene Body, FKM and Viton® Seals, and 316SS Impeller Shaft. They are available with gas engines, electric motors, and flanged fittings and are fully-assembled out-of-the-box.

NEW! BRIGGS & STRATTON ENGINES FOR OUR 2" CENTRIFUGAL PUMPS

We are always striving to find ways to improve the value of our products.

Within our Centrifugal Pump families, 2" cast iron and polypropylene pumps are now available with a Briggs & Stratton Engine in order to yield a more economical solution for the transfer of liquid product.



NEW! PEDESTALS FOR 2" CENTRIFUGAL PUMPS

Our new pedestal for 2" poly and cast iron centrifugal pumps has been redesigned to be more cost-effective and efficient.

The hydraulic motor can be coupled directly to the pedestal, eliminating costly adapters.

JOHN BLUE PUPS

Through the years, small, cast-iron JB pups (and other items) were given out as customer and employee gifts. If you still have yours, we'd love to see it! Tag us online or send in an email to lsanderson@johnblue.com.





GET A HEADSTART ON PUMP REPAIRS

With planting and spraying season winding down, now is the time to start making notes about your equipment and scheduling needed repairs. Don't wait until next season!

NEW! DP-282.1-P WITH DURAMAX DIAPHRAGMS

MECHANICAL ELASTICITY WITH CONTROLLED DEFORMATION!

New and innovative DuraMax diaphragms are “pre-deformed” and provide longer life and better performance with a wide range of chemicals. The plastic polymer provides great strength and long-lasting reliability.

The diaphragm washer is made of stainless steel to prevent abnormal deformation of the diaphragm and guides it along the piston stroke. The piston crown has a friction-proof form to eliminate wear caused by rubbing.



SALES UPDATES AND IMPORTANT INFORMATION



FREIGHT SAVINGS

Minimize your freight costs by ordering in pallet quantities. Give us a call for more details.

1-800-253-BLUE



EARLY ORDER PERIOD

The best pricing of the year is during the preseason pricing period. It runs September 1 through October 31 2020, with delivery taken by February 1, 2021. More information will be sent out in August.



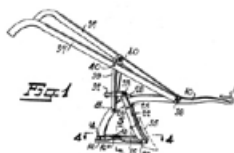
NOTICE: PHYSICAL INVENTORY WEEK

Our annual physical inventory will take place September 21-25. Take note that during this time we will still take orders, but we will not be manufacturing or shipping.

JOHN BLUE ARCHIVES

80 years ago, John Blue Jr. completed the patent process for a plow that would allow the user to quickly adjust the plow standard to any angle, make quick and minute changes to the angle, and easily lock it at any setting without screws.

PATENT NO. 2,201,846 • MAY 21, 1940



Inventor:
JOHN BLUE, JR.

WHERE TO FIND US

ONLINE

www.johnblue.com

EMAIL

info@johnblue.com

SOCIAL MEDIA

Facebook: @johnblueco

Twitter: @johnblueco

Instagram: @johnblueco

YouTube: @JohnBlueCompany

ADDRESS

165 Electronics Blvd.
Huntsville, AL 35824

PHONE

Phone: +1-256-721-9090

Toll-Free: 1-800-253-2583

Fax: +1-256-721-9091

GUARANTEED TO DO THE JOB.

VOL. 21, ISSUE 76 • SUMMER 2020